

Sample Organization 2007 Global Conference Evaluation

Session: **ALL**

Total Responses: **1475**

Date: **12/19/2007**

Page: **1**

FULL SURVEY

SURVEY TEXT	COUNT	PERCENT	MEAN	STDEV	OPTION PERCENTAGES					
					1 Excellent	2 Very Good	3 Good	4 Fair	5 Poor	6 N/A
CONTINUING EDUCATION CREDITS										
I would like to receive										
Type 1 Credit	95	7.8%								
Type 2 Credit	272	22.2%								
Type 3 Credit	11	0.9%								
Type 4 Credit	845	69.1%								

PERCENT column numbers are based on Total Responses except where joined with a vertical line in which case PERCENT is based on number of responses to the specific question.
MEANS and STDEVs do not include 'Did Not Attend' responses.



Sample Organization 2007 Global Conference Evaluation

Session: **ALL**

Total Responses: **1475**

Date: **12/19/2007**

Page: **2**

FULL SURVEY

SURVEY TEXT	COUNT	PERCENT	MEAN	STDEV	OPTION PERCENTAGES					
					1 Excellent	2 Very Good	3 Good	4 Fair	5 Poor	6 N/A
GENERAL PROGRAM EVALUATION										
1. Please indicate your conference registration categories:										
Current Member	1,203	81.6%								
One Day Registration	20	1.4%								
Other association Member	34	2.3%								
Became Member with the Conference	143	9.7%								
Workshop Only	35	2.4%								
Investigator	60	4.1%								
Exhibitor	27	1.8%								
Physician (other)	39	2.6%								
Student	16	1.1%								
Resident	3	0.2%								
Pharmaceutical Physician	15	1.0%								

PERCENT column numbers are based on Total Responses except where joined with a vertical line in which case PERCENT is based on number of responses to the specific question. MEANS and STDEVs do not include 'Did Not Attend' responses.



Sample Organization 2007 Global Conference Evaluation

Session: **ALL**

Total Responses: **1475**

Date: **12/19/2007**

Page: **3**

FULL SURVEY

SURVEY TEXT	COUNT	PERCENT	MEAN	STDEV	OPTION PERCENTAGES						
					1 Excellent	2 Very Good	3 Good	4 Fair	5 Poor	6 N/A	
2. I registered:											
Online	968	71.9%									
On--Site	81	6.0%									
Fax	152	11.3%									
Exhibitor fax/mail	14	1.0%									
Mail	118	8.8%									
Telephone	14	1.0%									
3. Years in current position:											
less than 1 year	143	10.5%									
1-2 years	271	20.0%									
3-4 years	197	14.5%									
more than 4 years	745	54.9%									

PERCENT column numbers are based on Total Responses except where joined with a vertical line in which case PERCENT is based on number of responses to the specific question. MEANS and STDEVs do not include 'Did Not Attend' responses.



Sample Organization 2007 Global Conference Evaluation

Session: **ALL**

Total Responses: **1475**

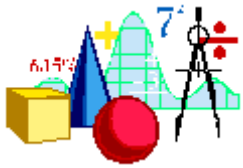
Date: **12/19/2007**

Page: **4**

FULL SURVEY

SURVEY TEXT	COUNT	PERCENT	MEAN	STDEV	OPTION PERCENTAGES						
					1 Excellent	2 Very Good	3 Good	4 Fair	5 Poor	6 N/A	
4. Do you work in research?											
Yes	1,335	98.5%									
No	20	1.5%									
If yes, years in research:											
0-1 year	44	3.3%									
1-3 years	145	10.8%									
4-7 years	371	27.7%									
8-12 years	408	30.5%									
13 or more years	371	27.7%									

PERCENT column numbers are based on Total Responses except where joined with a vertical line in which case PERCENT is based on number of responses to the specific question. MEANS and STDEVs do not include 'Did Not Attend' responses.



Sample Organization 2007 Global Conference Evaluation

Session: **ALL**

Total Responses: **1475**

Date: **12/19/2007**

Page: **5**

FULL SURVEY

SURVEY TEXT	COUNT	PERCENT	MEAN	STDEV	OPTION PERCENTAGES						
					1 Excellent	2 Very Good	3 Good	4 Fair	5 Poor	6 N/A	
5. Please select the top three factors influencing your attendance at this year's conference and rank in order of important (1 - most important)											
Education	1,322	89.6%	1.4	0.66							
Networking	1,039	70.4%	2.2	0.76							
Sales opportunities	209	14.2%	2.7	0.65							
Location	650	44.1%	2.3	0.80							
Contact Hours	1,049	71.1%	1.9	0.78							
Other	108	7.3%	2.0	0.93							
6. Did you meet a member of the Board of Trustees at this meeting?											
Yes	332	25.3%									
No	981	74.7%									

PERCENT column numbers are based on Total Responses except where joined with a vertical line in which case PERCENT is based on number of responses to the specific question. MEANS and STDEVs do not include 'Did Not Attend' responses.



Sample Organization 2007 Global Conference Evaluation

Session: **ALL**

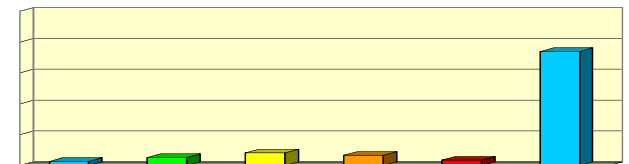
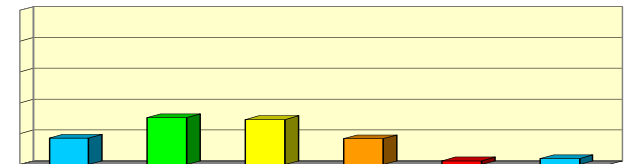
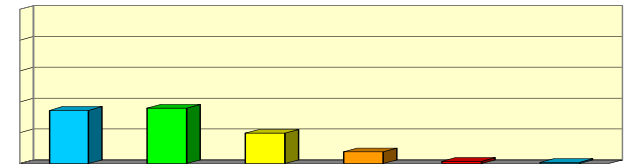
Total Responses: **1475**

Date: **12/19/2007**

Page: **6**

FULL SURVEY

SURVEY TEXT	COUNT	PERCENT	MEAN	STDEV	OPTION PERCENTAGES					
					1 Excellent	2 Very Good	3 Good	4 Fair	5 Poor	6 N/A
PLEASE RATE THE FOLLOWING:										
7. Extent to which Global Conference is a major source for your continuing education ...	1,332	90.3%	2.1	1.05	34.5%	35.9%	19.7%	7.6%	1.5%	0.8%
8. Extent to which Global Conference is a major source for your networking ...	1,344	91.1%	2.7	1.23	17.2%	30.5%	29.2%	16.8%	2.4%	3.9%
9. Extent to which Global Conference is a major source for your sales opportunities ...	1,321	89.6%	5.2	1.40	2.6%	5.2%	8.2%	6.6%	3.5%	73.9%



PERCENT column numbers are based on Total Responses except where joined with a vertical line in which case PERCENT is based on number of responses to the specific question. MEANS and STDEVs do not include 'Did Not Attend' responses.



Sample Organization 2007 Global Conference Evaluation

Session: **ALL**

Total Responses: **1475**

Date: **12/19/2007**

Page: **7**

FULL SURVEY

SURVEY TEXT	COUNT	PERCENT	MEAN	STDEV	OPTION PERCENTAGES					
					1 Excellent	2 Very Good	3 Good	4 Fair	5 Poor	6 N/A
10. Extent to which Global Conference is a major source for your CEU credits ...	1,328	90.0%	2.2	1.39	41.0%	29.0%	16.0%	6.3%	1.4%	6.3%
11. The effectiveness of the Preliminary Program in providing advance information ...	1,296	87.9%	3.2	1.60	13.5%	27.3%	24.1%	13.1%	6.9%	15.0%
12. Educational content offered at the Global Conference ...	1,324	89.8%	2.4	1.04	19.9%	35.0%	31.8%	10.3%	2.2%	0.9%
13. The pre-registration process ...	1,315	89.2%	2.5	1.31	23.8%	35.0%	24.3%	7.7%	4.6%	4.6%

PERCENT column numbers are based on Total Responses except where joined with a vertical line in which case PERCENT is based on number of responses to the specific question. MEANS and STDEVs do not include 'Did Not Attend' responses.



Sample Organization 2007 Global Conference Evaluation

Session: **ALL**

Total Responses: **1475**

Date: **12/19/2007**

Page: **8**

FULL SURVEY

SURVEY TEXT	COUNT	PERCENT	MEAN	STDEV	OPTION PERCENTAGES					
					1 Excellent	2 Very Good	3 Good	4 Fair	5 Poor	6 N/A
14. The on-site registration process ...	1,286	87.2%	4.3	1.92	11.9%	14.5%	11.1%	6.1%	7.7%	48.6%
15. The Web site for providing advance information ...	1,335	90.5%	2.6	1.24	20.6%	31.8%	26.4%	13.7%	4.9%	2.5%
16. The Pavilion in the exhibit hall ...	1,316	89.2%	2.6	1.25	18.8%	34.0%	32.1%	8.3%	0.6%	6.2%
17. Exhibiting companies provided useful information ...	1,326	89.9%	2.6	1.19	15.0%	35.7%	32.1%	11.6%	0.7%	5.0%

PERCENT column numbers are based on Total Responses except where joined with a vertical line in which case PERCENT is based on number of responses to the specific question. MEANS and STDEVs do not include 'Did Not Attend' responses.



Sample Organization 2007 Global Conference Evaluation

Session: **ALL**

Total Responses: **1475**

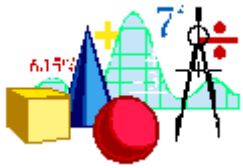
Date: **12/19/2007**

Page: **9**

FULL SURVEY

SURVEY TEXT	COUNT	PERCENT	MEAN	STDEV	OPTION PERCENTAGES					
					1 Excellent	2 Very Good	3 Good	4 Fair	5 Poor	6 N/A
18. Staff were helpful and knowledgeable ...	1,324	89.8%	2.5	1.37	24.0%	32.7%	25.2%	8.7%	2.5%	6.9%
19. Did you take advantage of the "customize" option on the meeting website?										
Yes	397	29.2%								
No	961	70.8%								
Was this service useful to you?										
Yes	326	60.8%								
No	210	39.2%								
20. Did your guests participate in the Guest Events?										
Yes	320	23.5%								
No	1,043	76.5%								

PERCENT column numbers are based on Total Responses except where joined with a vertical line in which case PERCENT is based on number of responses to the specific question. MEANS and STDEVs do not include 'Did Not Attend' responses.



Sample Organization 2007 Global Conference Evaluation

Session: **ALL**

Total Responses: **1475**

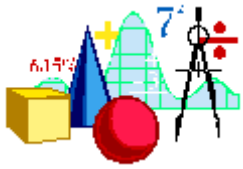
Date: **12/19/2007**

Page: **10**

FULL SURVEY

SURVEY TEXT	COUNT	PERCENT	MEAN	STDEV	OPTION PERCENTAGES						
					1 Excellent	2 Very Good	3 Good	4 Fair	5 Poor	6 N/A	
21. Lengths of the education sessions were:											
Too Short	97	7.2%									
Just Right	1,226	90.5%									
Too Long	31	2.3%									
22. The number of educational sessions to choose from were:											
Too Few	233	17.2%									
Just Right	1,010	74.5%									
Too Many	113	8.3%									
23. My involvement with purchasing decision for my research team is:											
I make decisions.	391	29.0%									
I assist or recommend.	573	42.4%									
I have no involvement.	386	28.6%									

PERCENT column numbers are based on Total Responses except where joined with a vertical line in which case PERCENT is based on number of responses to the specific question. MEANS and STDEVs do not include 'Did Not Attend' responses.



Sample Organization 2007 Global Conference Evaluation

Session: **ALL**

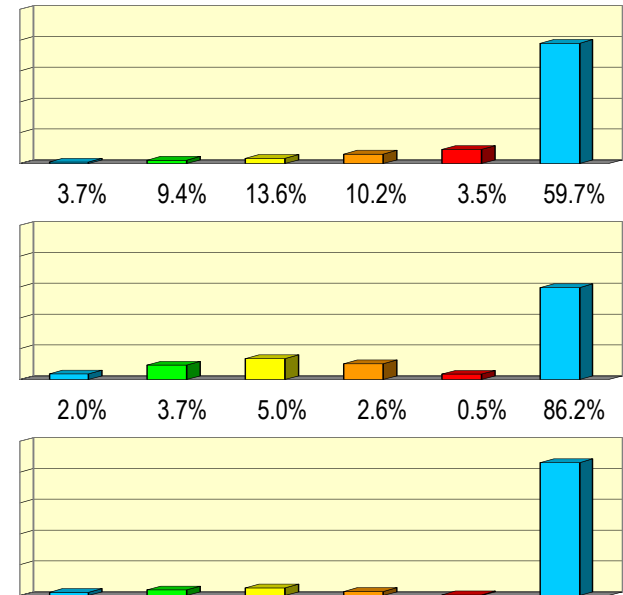
Total Responses: **1475**

Date: **12/19/2007**

Page: **11**

FULL SURVEY

SURVEY TEXT	COUNT	PERCENT	MEAN	STDEV	OPTION PERCENTAGES					
					1 Excellent	2 Very Good	3 Good	4 Fair	5 Poor	6 N/A
PLEASE RATE THE FOLLOWING ACTIVITIES:										
24. Friday Continental Breakfast	1,239	84.0%	5.5	1.02	1.0%	2.2%	3.4%	6.2%	9.2%	78.0%
25. Lunch for full day workshop attendees	1,180	80.0%	4.8	1.63	3.7%	9.4%	13.6%	10.2%	3.5%	59.7%
26. Welcome Reception	1,217	82.5%	5.5	1.20	2.0%	3.7%	5.0%	2.6%	0.5%	86.2%



PERCENT column numbers are based on Total Responses except where joined with a vertical line in which case PERCENT is based on number of responses to the specific question. MEANS and STDEVs do not include 'Did Not Attend' responses.



Sample Organization 2007 Global Conference Evaluation

Session: **ALL**

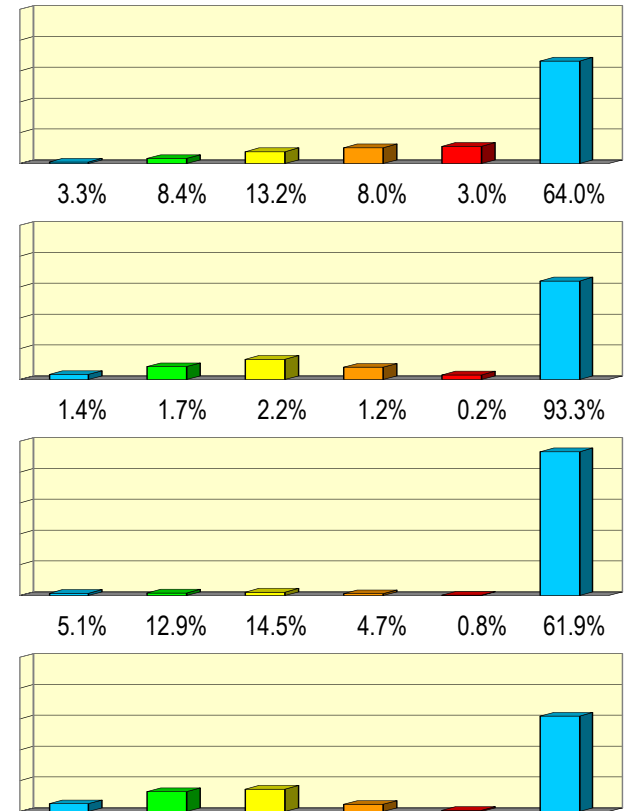
Total Responses: **1475**

Date: **12/19/2007**

Page: **12**

FULL SURVEY

SURVEY TEXT	COUNT	PERCENT	MEAN	STDEV	OPTION PERCENTAGES					
					1 Excellent	2 Very Good	3 Good	4 Fair	5 Poor	6 N/A
27. Saturday Continental Breakfast	1,229	83.3%	5.3	1.21	1.0%	3.3%	7.7%	10.3%	11.2%	66.5%
28. Lunch for full day workshop attendees	1,209	82.0%	4.9	1.59	3.3%	8.4%	13.2%	8.0%	3.0%	64.0%
29. Membership Meeting & Policy Forum Lunch	1,202	81.5%	5.8	0.90	1.4%	1.7%	2.2%	1.2%	0.2%	93.3%
30. Exhibit Hall Opening Reception	1,227	83.2%	4.7	1.77	5.1%	12.9%	14.5%	4.7%	0.8%	61.9%



PERCENT column numbers are based on Total Responses except where joined with a vertical line in which case PERCENT is based on number of responses to the specific question. MEANS and STDEVs do not include 'Did Not Attend' responses.



Sample Organization 2007 Global Conference Evaluation

Session: **ALL**

Total Responses: **1475**

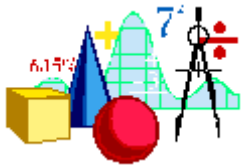
Date: **12/19/2007**

Page: **13**

FULL SURVEY

SURVEY TEXT	COUNT	PERCENT	MEAN	STDEV	OPTION PERCENTAGES					
					1 Excellent	2 Very Good	3 Good	4 Fair	5 Poor	6 N/A
31. International Reception	1,214	82.3%	5.8	0.78	0.7%	1.6%	1.9%	0.9%	0.0%	94.9%
32. 10-Year Certification Reception	1,212	82.2%	5.9	0.67	0.3%	1.3%	1.6%	0.7%	0.4%	95.6%
33. First Timer's Meeting & Reception	1,220	82.7%	5.6	1.16	2.1%	3.8%	3.4%	1.4%	0.1%	89.2%
34. Chapter Meeting & Reception	1,203	81.6%	5.8	0.71	0.5%	1.2%	1.7%	1.2%	0.7%	94.6%

PERCENT column numbers are based on Total Responses except where joined with a vertical line in which case PERCENT is based on number of responses to the specific question. MEANS and STDEVs do not include 'Did Not Attend' responses.



Sample Organization 2007 Global Conference Evaluation

Session: **ALL**

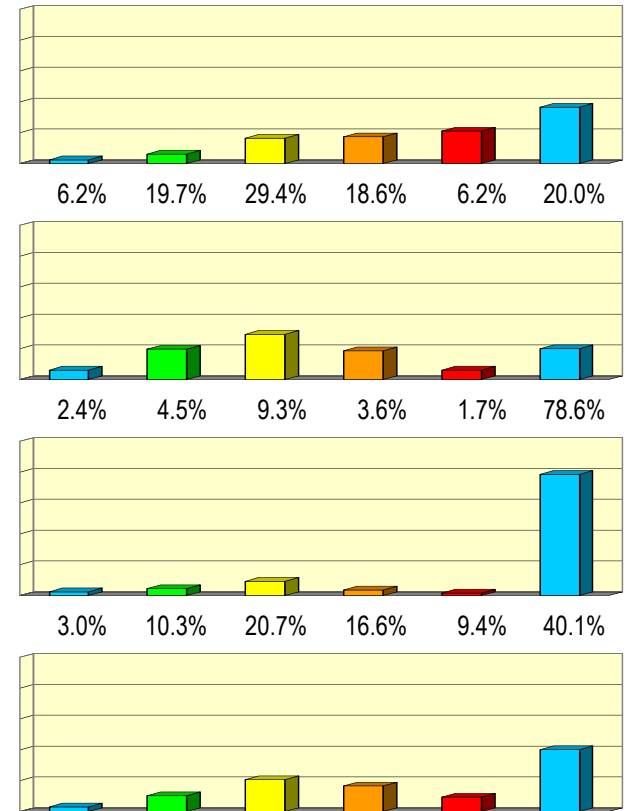
Total Responses: **1475**

Date: **12/19/2007**

Page: **14**

FULL SURVEY

SURVEY TEXT	COUNT	PERCENT	MEAN	STDEV	OPTION PERCENTAGES					
					1 Excellent	2 Very Good	3 Good	4 Fair	5 Poor	6 N/A
35. Sunday Continental Breakfast	1,239	84.0%	4.6	1.40	2.4%	6.1%	16.5%	17.4%	21.1%	36.6%
36. Sunday Lunch in Exhibit Hall	1,251	84.8%	3.6	1.53	6.2%	19.7%	29.4%	18.6%	6.2%	20.0%
37. Joint Forum Reception	1,177	79.8%	5.3	1.37	2.4%	4.5%	9.3%	3.6%	1.7%	78.6%
38. Monday Continental Breakfast	1,196	81.1%	4.4	1.56	3.0%	10.3%	20.7%	16.6%	9.4%	40.1%



PERCENT column numbers are based on Total Responses except where joined with a vertical line in which case PERCENT is based on number of responses to the specific question. MEANS and STDEVs do not include 'Did Not Attend' responses.



Sample Organization 2007 Global Conference Evaluation

Session: **ALL**

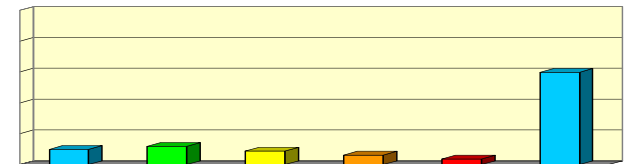
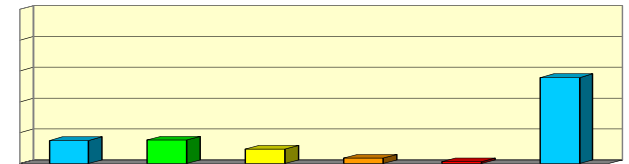
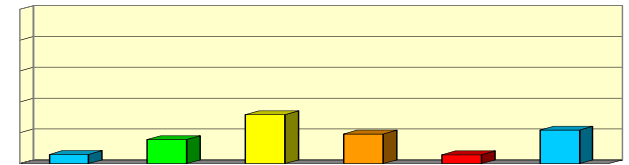
Total Responses: **1475**

Date: **12/19/2007**

Page: **15**

FULL SURVEY

SURVEY TEXT	COUNT	PERCENT	MEAN	STDEV	OPTION PERCENTAGES					
					1 Excellent	2 Very Good	3 Good	4 Fair	5 Poor	6 N/A
39. Lunch in Exhibit Hall	1,188	80.5%	3.7	1.52	6.0%	15.6%	31.7%	19.2%	5.7%	21.8%
40. Gala	1,103	74.8%	4.3	2.05	14.9%	15.2%	9.4%	3.5%	1.2%	55.8%
41. Tuesday Continental Breakfast	1,118	75.8%	4.6	1.87	9.8%	11.8%	8.8%	6.1%	3.6%	59.9%



PERCENT column numbers are based on Total Responses except where joined with a vertical line in which case PERCENT is based on number of responses to the specific question. MEANS and STDEVs do not include 'Did Not Attend' responses.



Sample Organization 2007 Global Conference Evaluation

Session: **ALL**

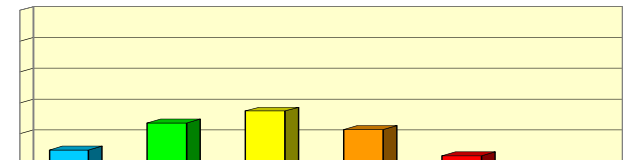
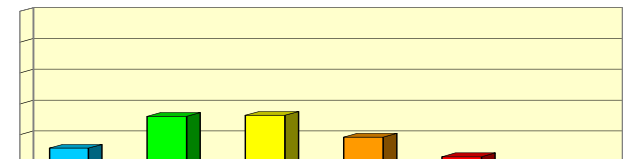
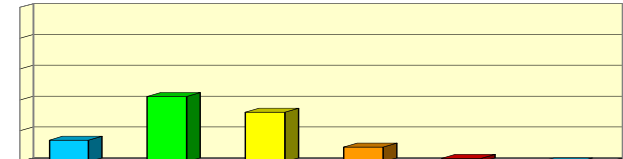
Total Responses: **1475**

Date: **12/19/2007**

Page: **16**

FULL SURVEY

SURVEY TEXT	COUNT	PERCENT	MEAN	STDEV	OPTION PERCENTAGES					
					1 Excellent	2 Very Good	3 Good	4 Fair	5 Poor	6 N/A
OVERALL SATISFACTION										
42. Overall Satisfaction with the Global Conference ...	1,312	88.9%	2.4	0.92	13.9%	42.3%	32.1%	9.5%	2.2%	0.0%
43. Were the education sessions in sufficient depth for you to advance your professional knowledge ...	1,305	88.5%	2.8	1.06	11.3%	31.9%	32.6%	18.5%	5.7%	0.0%
44. The 2007 Conference delivered value for the money ...	1,304	88.4%	2.9	1.05	9.5%	27.1%	34.8%	22.8%	5.7%	0.1%



PERCENT column numbers are based on Total Responses except where joined with a vertical line in which case PERCENT is based on number of responses to the specific question. MEANS and STDEVs do not include 'Did Not Attend' responses.



Sample Organization 2007 Global Conference Evaluation

Session: **ALL**

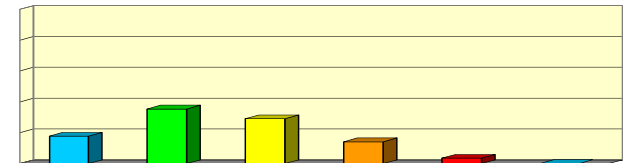
Total Responses: **1475**

Date: **12/19/2007**

Page: **17**

FULL SURVEY

SURVEY TEXT	COUNT	PERCENT	MEAN	STDEV	OPTION PERCENTAGES					
					1 Excellent	2 Very Good	3 Good	4 Fair	5 Poor	6 N/A
45. The likelihood that you would recommend future Global Conferences to peers ...	1,317	89.3%	2.5	1.05	17.8%	35.4%	29.1%	14.2%	3.5%	0.1%
46. (Write-in question)										
47. Do you plan to attend the 2008 Global Conference, April 1 - 5, 2008, in Miami, FL?										
Yes	694	59.6%								
No	470	40.4%								



PERCENT column numbers are based on Total Responses except where joined with a vertical line in which case PERCENT is based on number of responses to the specific question. MEANS and STDEVs do not include 'Did Not Attend' responses.